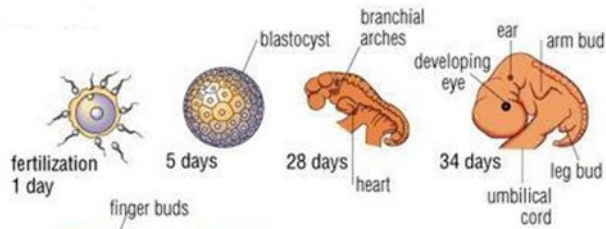


HUMAN DEVELOPMENT

1-3 weeks

Your baby is an embryo consisting of two layers of cells from which all her organs and body parts will develop.



At 3 weeks: The embryo is now about the size of a pencil point. It most closely resembles a worm - long and thin and with a segmented end. Its heart begins to beat about 18 to 21 days after conception.

At 5 weeks: Tiny arm and leg buds have formed. Hands with webs between the fingers have formed at the end of the arm buds.



Fingerprints are detectable.

At 6 weeks, the embryo is about 1/2" long. The face has two eyes on each side of its head; the front of the face has connected slits where the mouth and nose eventually will be.

Two Months



Your baby is now about the size of a kidney bean and is constantly moving. He has distinct,

slightly webbed fingers. At 10 weeks, it is called a "fetus". Its face looks human; you can find out its gender via ultrasound.

Three Months



By now your baby is about 3 inches long and weighs nearly an ounce. Fingernails and bones can be seen. Over 90% of all abortions are performed before this stage.

Four Months

Your baby is now about 5 inches long and weighs 5 ounces. His



skeleton is starting to harden from rubbery cartilage to bone and movements may begin to be felt. Its heartbeat can usually be detected.

Five Months



Eyebrows and eyelids are now in place, and hair on its head. Its movements can be felt. Your baby would now be more than 10 inches long if you stretched out her legs. The lungs are now formed, so there is now a small chance that the baby could breathe on its own.



Six Months Some rudimentary brain waves indicating consciousness can be detected. It can now probably feel pain for the first time. The baby has become conscious of its surroundings. Your baby weighs about a pound and a half. His wrinkled skin is starting to smooth out as he puts on baby fat.

Seven Months



By now, your baby weighs about 3 pounds and is more than 15 inches long. She can open and close her eyes and follow a light. Regular brain waves are detectable which are similar to those in adults.

Eight Months

Your baby now weighs about 4 3/4 pounds. His layers of fat are filling



him out, making him rounder, and his lungs are well developed.

Nine Months



stage.

The average baby is more than 19 inches long and weighs nearly 7 pounds now, but babies vary widely in size at this

FACTS ABOUT ABORTION

About half of all pregnancies are unplanned. About half of unplanned pregnancies in the U.S. are terminated by an abortion.

52% of women choosing abortion are under 25. Teenagers account for 19%, and women 20-24 account for 33%.

2/3rds of all abortions are by unmarried women, and most have already had a child.

Only 8% of abortions are by women who have never practiced contraception ie most women who abort also use contraception.

52% of women having early abortion group and 67% of having late term abortion group suffer from psychological problems after abortion: anxiety, low self worth, guilt, depression, mood swings, sleep difficulties etc.

Nearly 40% of women in the survey said they wanted the baby and fewer than 14% said they received adequate pre-abortion counselling or information on alternatives or about the physical and emotional risks involved.